



In accordance with the requirements of the residential planning permissions on land south of the A46 adjacent the M5. Robert Hitchins in consultation and agreement with National Highways and Gloucestershire County Council have engaged **Montel Civil Engineering** to carry-out improvements to the M5 J9 northbound off slip. These works as detailed below combined with the improvements presently under construction on the A46 from the east of J9 to Fiddington Lane will create improvements to the local highway network.

Montel will be widening the M5 J9 northbound off slip, and undertaking works on the roundabout to increase overall vehicle capacity. These short-term works will ensure any increase in traffic due to Robert Hitchins adjacent developments just south of the A46, which include a new garden centre, retail outlet and residential developments, does not impact the local area.

Works include but are not limited to:

A46 Ashchurch Interchange Roundabout will be increased to three lanes on the west side between the A438 exit and the M5 northbound exit, this will be achieved through kerb realignment of the roundabout.

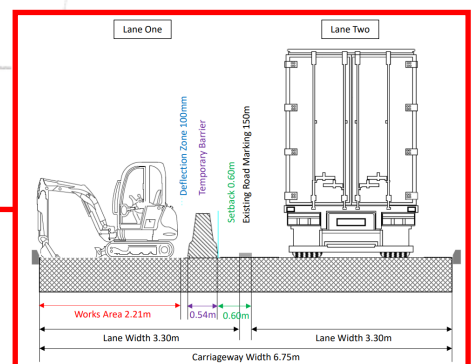
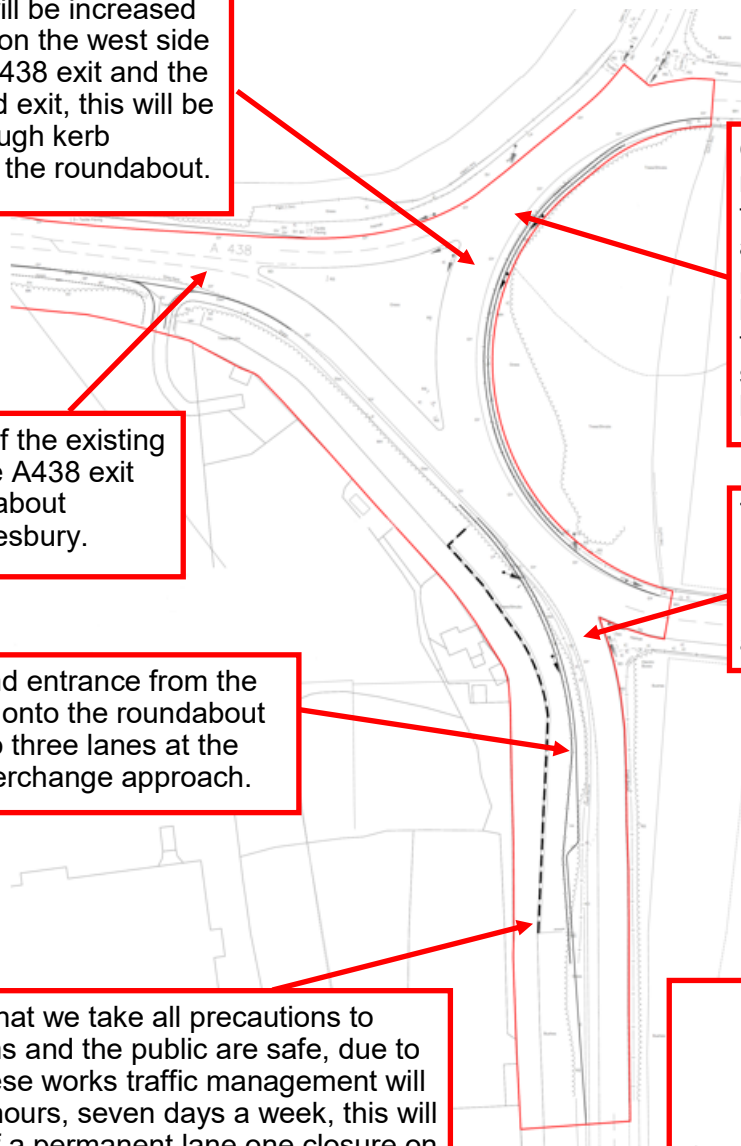
Realignment of the existing kerb line of the A438 exit from J9 roundabout towards Tewkesbury.

The northbound entrance from the M5 Junction 9 onto the roundabout will increase to three lanes at the Ashchurch Interchange approach.

Overnight closures will be required on the roundabout to undertake surfacing works at future stages of the project. The community will be given prior warning before these works begin, and suitable diversion routes will be put in place.

The adjustment of the location of existing traffic lights will ensure the new slip road and roundabout layout are safe and efficient.

It is imperative that we take all precautions to ensure our teams and the public are safe, due to the nature of these works traffic management will be required 24-hours, seven days a week, this will be in the form of a permanent lane one closure on the M5 J9 northbound off slip. The rest of this slip road will remain open for the duration of the works, minimal delays are expected due this safety precaution, but we will closely monitor this for the duration of the works.



What is happening and when...

Montel will begin works on the site on the **30th of August** and it is anticipated the project will be completed by **December 2022**.

During the first week two weeks on site we will be:

- Establishing our site compound by creating an access road and compound area, this will be situated just off of the A438.
- Installing our offices and welfare facilities, and securing the perimeter of the area with fencing.
- Closing and segregating the left hand lane of the slip road to enable our teams to begin work safely.

Meet the Montel team...



Mat Obrey - Contracts Manager Mat oversees the project and has overall responsibility for the day to day delivery of the project, ensuring this is in compliance with the projects programme and our clients requirements. Mat, a trained engineer, has nearly 30 years managerial experience within the industry.



Nick Rowe - Project Manager Nick reports to Mat and has responsibility for planning, scheduling and managing all construction activities, he works closely with our Construction Team ensuring compliance with the project programme, and health and safety regulations/policies. Nick has over 20 years experience of working on large-scale projects within the industry, and has spent the last two years managing our Fiddington project.



Sophie Pierre - Community Liaison Sophie will be updating the community regularly on the progress of the project, this will be via face-to-face meetings, emails, monthly newsletters and via social media. Sophie is the person to contact with any questions or concerns.

How to get in touch...

Montel are committed to keeping the local community up-to-date on the progress of these works and will provide advance notice of any changes to road use by directly contacting residents, businesses and other organisations within the vicinity of the scheme, we will also use our social media channels to communicate this information, and general updates about the scheme. Please feel free to contact us directly if you have any specific concerns or require any further information about the scheme.

At Montel we have a dedicated Community Liaison team to assist local residents and businesses with any queries and concerns on all projects we undertake. For this project the point of contact will be **Sophie Pierre** who can be contacted via the email below.

Sophie.Pierre@montel-group.com

In addition to writing directly to local residents and business to keep them informed on the progress of the works, a dedicated project webpage and our social media accounts will also be regularly updated with progress reports, including images and information on possible disruption to traffic.



@montelcivilengineering



@Montel_CivEng



Montel Civil Engineering



www.montelcivilengineering.co.uk



01905 425468